



EENet presents the 5th webinar in the Health Canada DTFP-ON series:

Trauma-Informed Screening and Assessment Tools for First Nations and Inuit Peoples

Thursday June 30th , 2016 1pm – 2:30pm (EDT)

Health Canada's Drug Treatment Funding Program (DTFP)

- Through consultations with provincial and territorial governments and non-governmental organizations, Health Canada developed the **Drug Treatment Funding Program (DTFP)** in 2008 as part of the Treatment Action Plan under the National Anti-Drug Strategy.
- The DTFP is a federal contribution program designed to support provinces and territories in their efforts to *strengthen evidence-informed substance use treatment systems*; and address critical gaps in substance abuse treatment services, particularly for at-risk youth.

Health Canada's Drug Treatment Funding Program (DTFP)

The DTFP supports sustainable improvement in the quality and organization of substance use treatment systems through investments in the following areas:

IMPLEMENTATION
OF EVIDENCE
INFORMED
PRACTICE

STRENGTHENING
PERFORMANCE
MEASUREMENT &
EVALUATION

LINKAGE &
KNOWLEDGE
EXCHANGE

DTFP-ON Projects for FY2015- December 2016

Project	Project Lead
IMPLEMENTATION OF EVIDENCE INFORMED PRACTICE	
The Implementation of the Ontario Perception of Care Tool for Mental Health and Addictions (OPOC-MHA)	Kim Baker, CAMH
Implementation of a new staged screening and assessment process for addictions	Kim Baker, CAMH
Best practices in Peer Support Services	Janis Cramp, AMHO
Developing and testing Internet-based interventions (IBI) for substance use in youth (<i>NEW INITIATIVE</i>)	Karen Urbanoski, Joanna Henderson, Gloria Chaim, CAMH
Trauma-informed substance use screening and assessment tools for First Nations and Inuit peoples (<i>NEW INITIATIVE</i>)	Renee Linklater, CAMH
STRENGTHENING EVALUATION & PERFORMANCE MEASUREMENT	
Development and standardization of cost-based performance indicators	Kim Baker, CAMH
Strengthening performance measurement for mental health and addictions in Ontario (<i>NEW INITIATIVE</i>)	Karen Urbanoski, CAMH
Improving reporting compliance and data quality among Ontario's addiction treatment agencies	Claudio Rocca, CAMH
Evaluating Residential Support Services	Janis Cramp, AMHO
Evaluation Plan for Youth Care (<i>NEW INITIATIVE</i>)	Laura Mills, Pine River Institute
LINKAGE & EXCHANGE	
Evidence Exchange Network (EENet)	Nandini Saxena, CAMH



camhPSSP

Provincial System
Support Program

- Supports Ontario's 10-year Comprehensive Mental Health and Addictions Strategy
- Offices across Ontario
- Capacity and expertise in knowledge exchange, implementation, equity & engagement, information management, & evaluation
- Houses EENet, a knowledge exchange network that connects people with evidence about mental health and substance use problems in Ontario



Trauma-Informed Screening and Assessment Tools for First Nations and Inuit Peoples

Today's presenters:



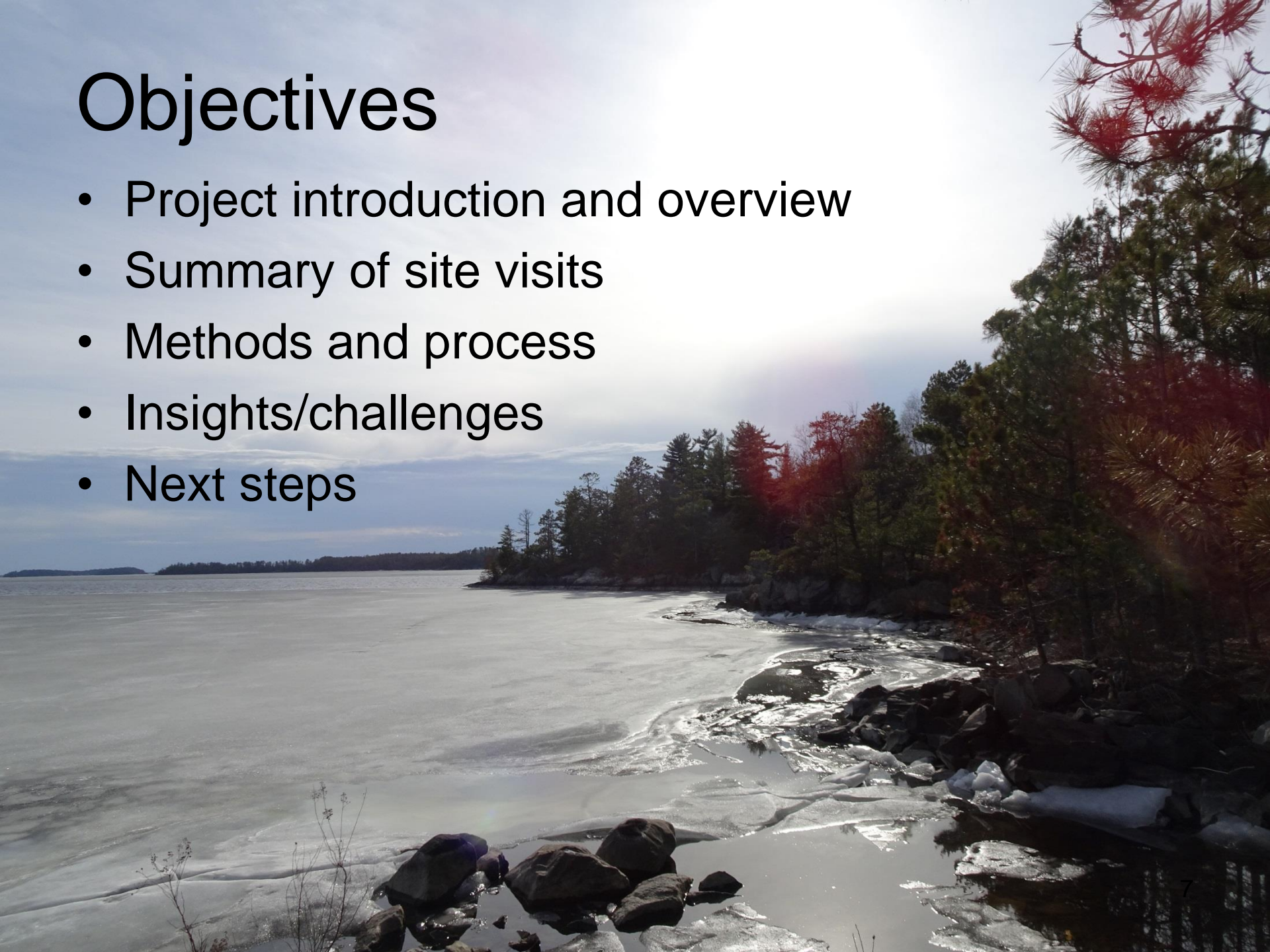
Holly Smith, OT Reg. (Ont.)
Project Coordinator
Aboriginal Screening and Assessment Tools
Aboriginal Engagement and Outreach (AEO)
Provincial System Support Program (PSSP)



Krystine Abel, M.Ed
Aboriginal Evaluation Coordinator
Aboriginal Screening and Assessment Tools
Aboriginal Engagement and Outreach (AEO)
Provincial System Support Program (PSSP)

Objectives

- Project introduction and overview
- Summary of site visits
- Methods and process
- Insights/challenges
- Next steps



Acknowledgements



Aboriginal Engagement & Outreach

camh
Centre for Addiction and Mental Health

camh PSSSP
Provincial System
Support Program



**Aboriginal Engagement and
Outreach**

AEO Projects and Services

Workforce Development

- Mobile Training Teams Initiative
- Provincial Aboriginal Training

CAMH Ceremonial
Grounds and Sweat
Lodge



**Aboriginal Engagement and
Outreach**

CAMH Guiding
Directions: A Plan
to Strengthen
Our Practices and
Partnerships with
First Nations,
Inuit, and Métis
People

Regional Support:
Aboriginal
Engagement Leads

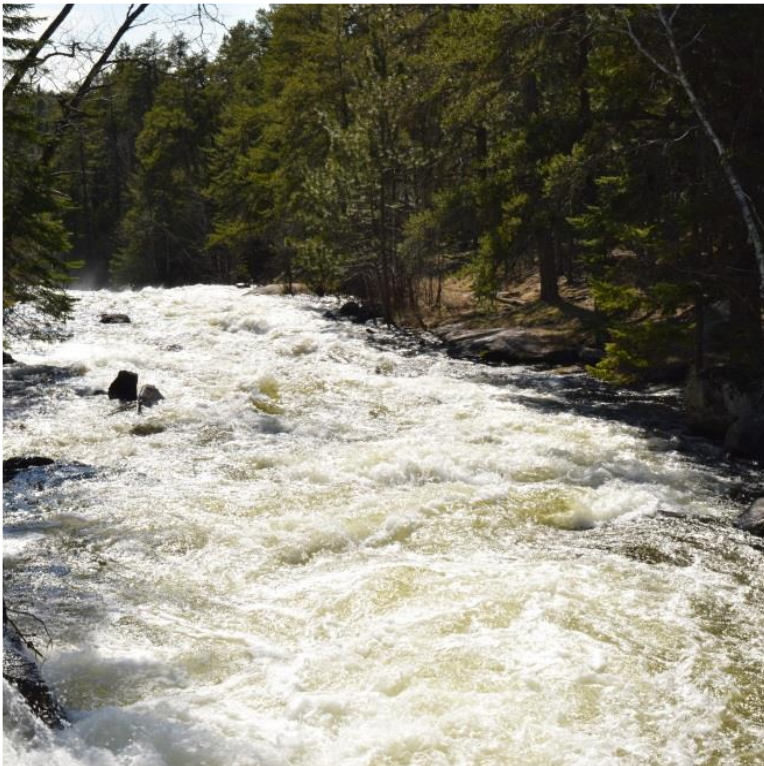
Trauma-Informed
Substance Use Screening
and Assessment Tools for
First Nations and Inuit
Peoples

PROJECT OVERVIEW

*Trauma-Informed Substance Use Screening and
Assessment Tools for First Nations and Inuit Peoples*



Screening and Assessment Tools



- Admission & Discharge Assessment Tools (ADAT)
 - Formally mandated by MOHLTC
- Global Appraisal of Individual Needs (GAIN)
 - Replacing the ADAT
 - Currently rolling out across the province

Concerns around GAIN



- Issues around cultural sensitivity and relevance
- Developed without input from Indigenous people
- Language and terminology

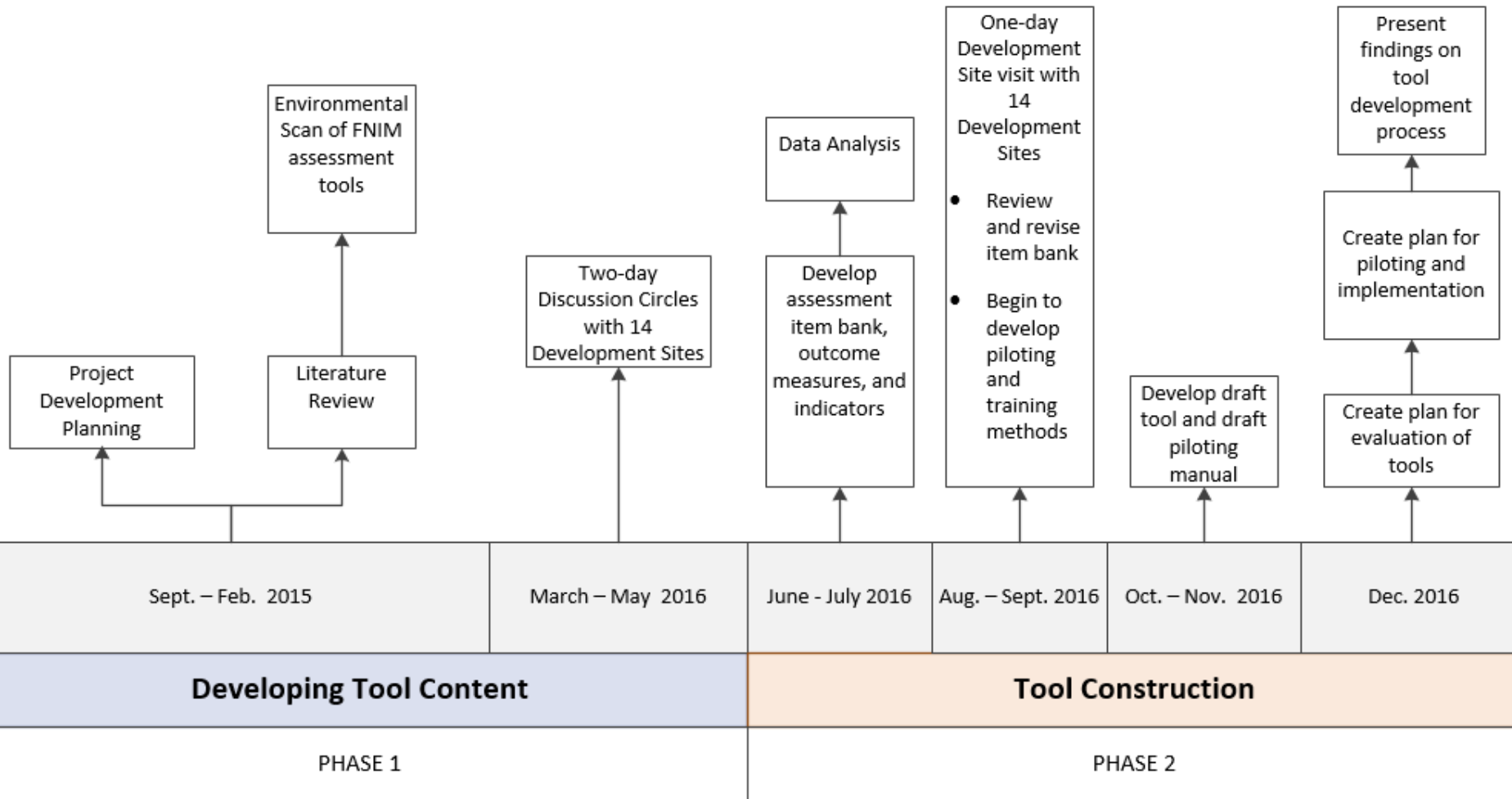
(Assembly of First Nations, National Native Addictions Partnership Foundation, & Health Canada, 2011)

(EENet, 2012)

Trauma-Informed Substance Use Screening and Assessment Tools for First Nations and Inuit Peoples

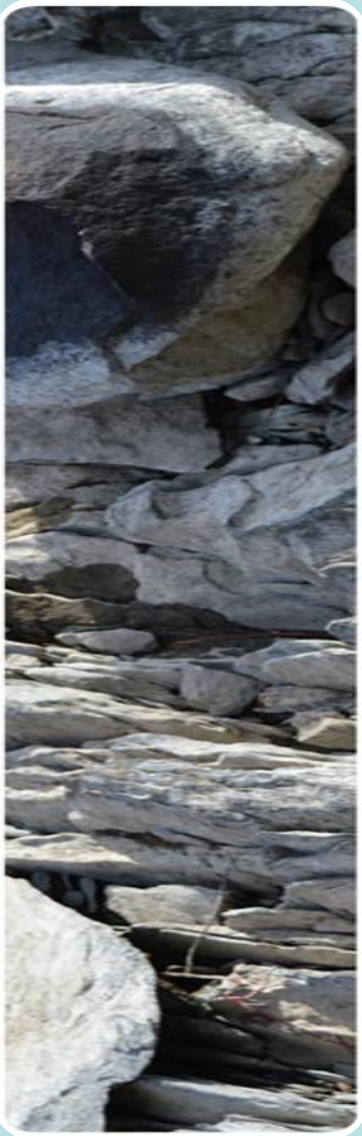
- Develop tools that are culturally relevant
- Created and developed for and by First Nations and Inuit people
- Assessing impacts of historical and intergenerational trauma

Project Timeline



Project Partners

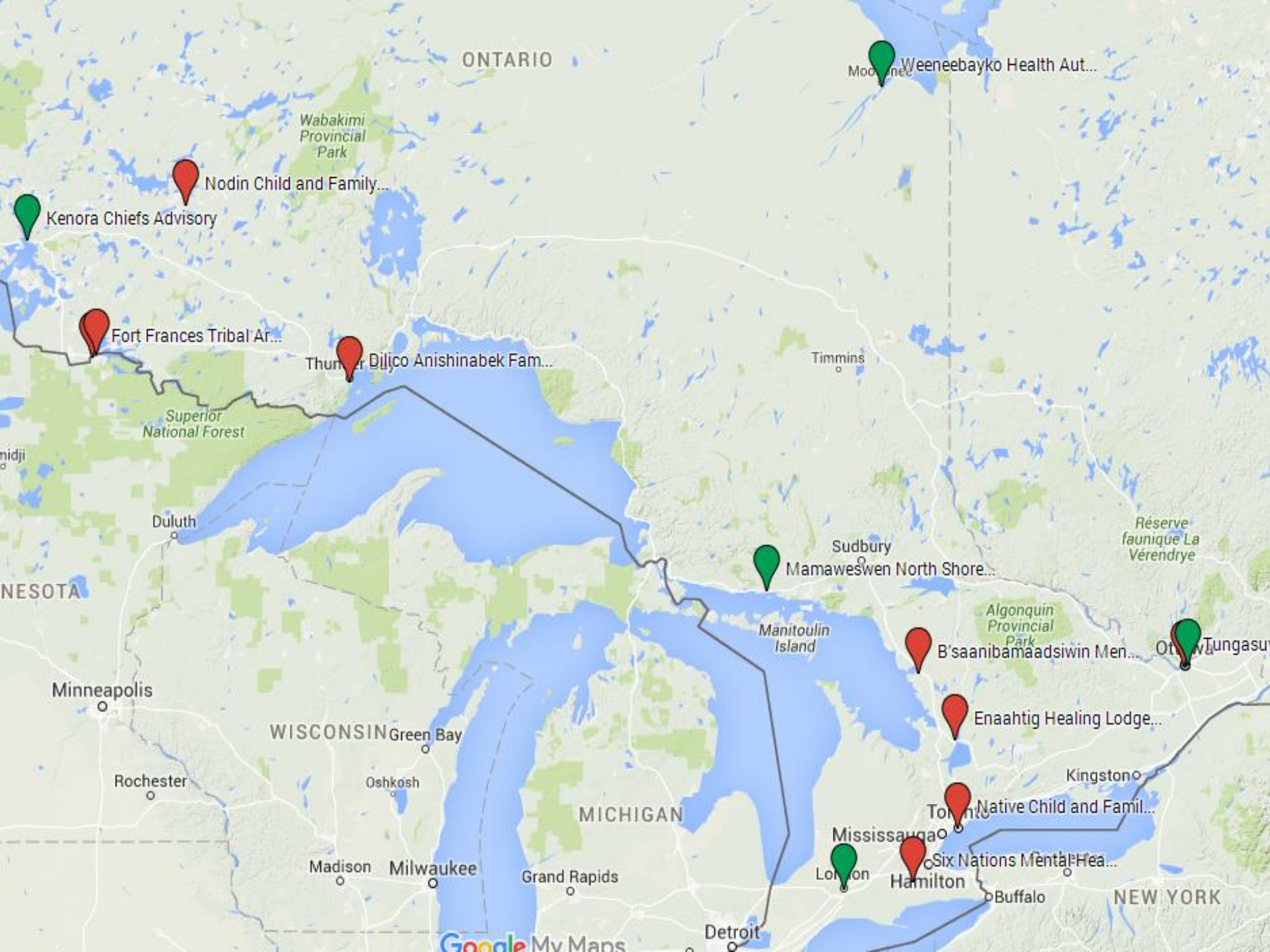
- B'saanibamaadsiwin Mental Health Program
- Enaahtig Healing Lodge and Learning Centre
- Fort Frances Tribal Area Health Services
- Weechi-it-te-win Family Services
- Tungasuvvingat Inuit – Mamisarvik Healing Centre
- Dilico Anishinabek Family Care
- Native Child and Family Services of Toronto
- Nodin Child and Family Intervention Services
- Six Nations Mental Health Team





Development Sites

- 9 project partners
- 5 additional sites
 - Southwest Ontario Aboriginal Health Access Centre (SOAHAC)
 - Weeneebayko Health Authority
 - Maamwesying North Shore Community Health Service
 - Inuit Children's Centre
 - Kenora Chiefs Advisory - Ogimaawabiitong



ONTARIO

Wabakimi
Provincial
Park

Nodin Child and Family...

Kenora Chiefs Advisory

Fort Frances Tribal Ar...

Thun... Dilico Anishinabek Fam...

Superior
National Forest

Duluth

MINNESOTA

Minneapolis

Rochester

WISCONSIN Green Bay

Oshkosh

Madison

Milwaukee

Grand Rapids

MICHIGAN

Detroit

Timmins

Sudbury

Mamaweswen North Shore...

Manitoulin
Island

Réserve
faunique La
Vérendrye

Algonquin
Provincial
Park

B'saanibamaadsiwin Men...

Enaahrig Healing Lodge...

Toronto

Native Child and Famil...

Mississauga

London

Hamilton

Buffalo

Kingston

NEW YORK

Google My Maps



Project Process & Methods

Ownership, Control, Access and Possession (OCAP[®])



- First Nations research ethics and principles
- Guiding objective of the project
- Key informants are First Nations and Inuit service providers

Advisory Circle



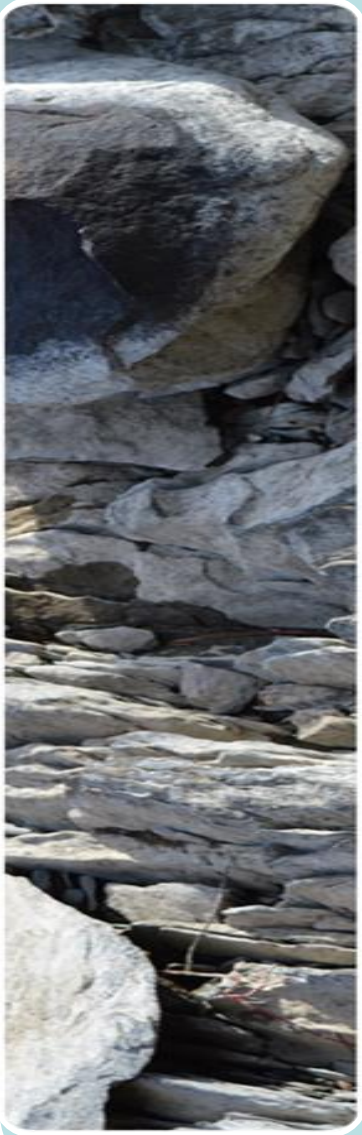
- One representative from 9 project partners
- Oversee and provide guidance on all phases of tool development

Methodology Circle



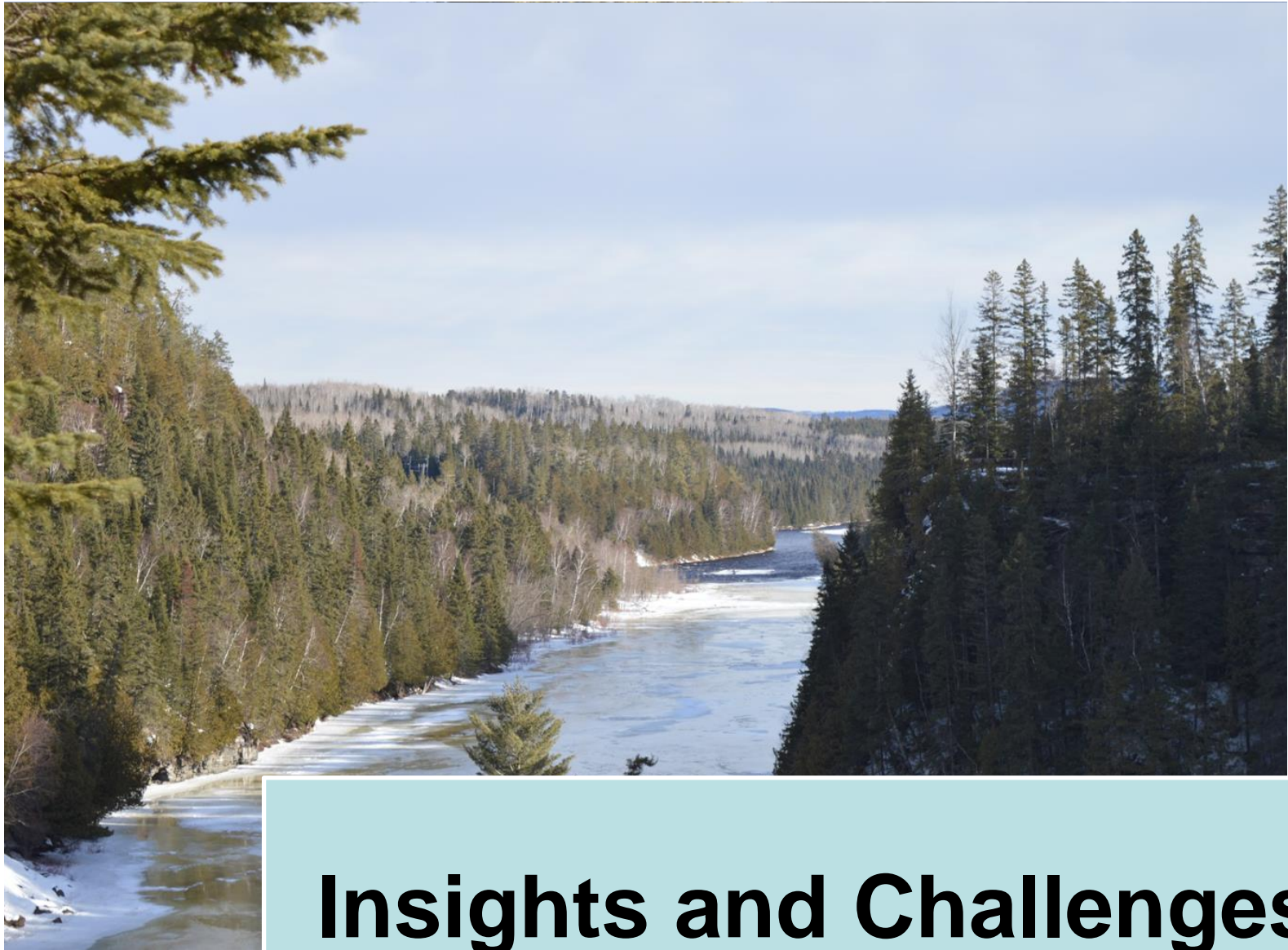
- Advises on tool methodology
- Appropriate steps for valid and reliable tools
- Assists in:
 - Data analysis
 - Identifying themes
 - Guiding tool development

Development Site Visits



Methodologies include:

- Discussion circles
 - Cultural safety, trauma and coping, language
- Visual tool exercise
 - Anishnaabe Symbol Based Reflection
(Lavallee, 2009)
- Concept mapping
 - Question/theme development



Insights and Challenges

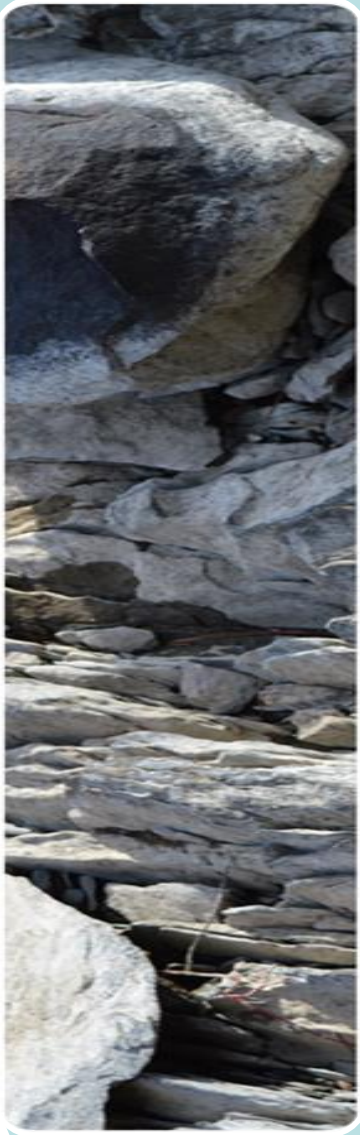
What have we heard?



Move beyond cultural safety

- Diversity within First Nations, Inuit and Métis populations
- Geographic diversity
- Awareness of different faiths and spiritual practices within First Nations, Inuit, and Métis (FNIM) communities

Break away from the status quo

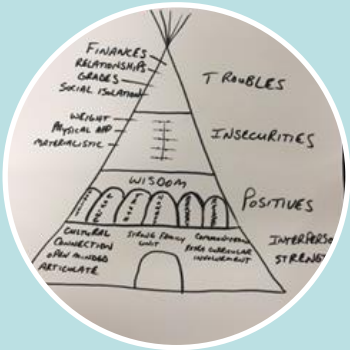


- We do not fit neatly into the mainstream system of doing things
- Mainstream tools take away from the person to person connection
- Balance of Western/ Indigenous approaches of care

What have we heard?



- Strength based tool
- Wholistic
 - Not just focusing on mental wellness
- Language
 - Moving away from clinical jargon
- Storytelling
- Narratives
- Visual



Walking the Journey Together



- Assessing wider networks of support
 - Individual, family, community, nation
- Connect with Elders for support while waiting for treatment
- Include a plan for after-care

Treatment Options

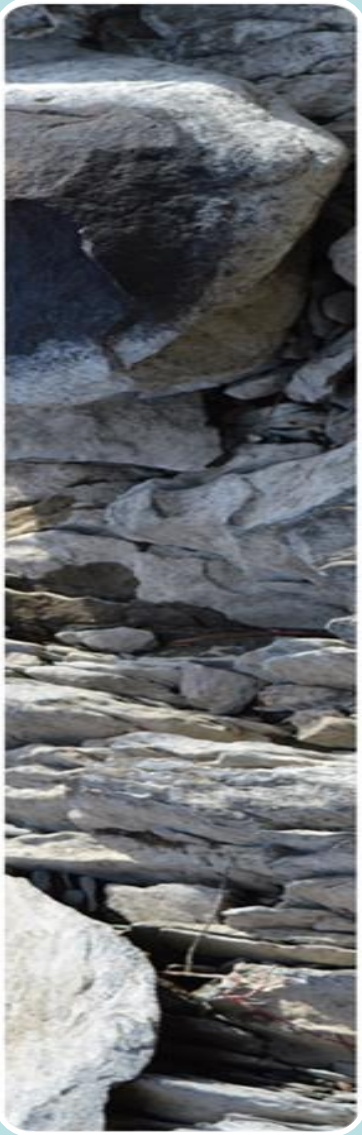
How will the assessment be used in practice?

- Evaluation
- Treatment planning
- Referral to various types of treatment options:
 - Community services
 - Cultural resources
 - Residential treatment



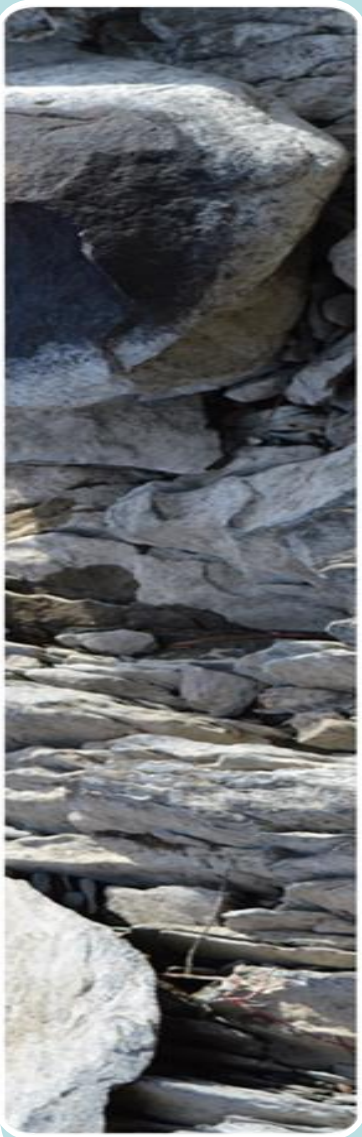
Challenges

- Assessments are not “community-paced”
 - Assessments are time sensitive
 - Building relationships and human to human connection take time
 - Workers are having to deal with complex and challenging situations



Challenges

- Fragmented systems and jurisdictional barriers
 - Funding
 - Geographic isolation
 - Barriers accessing treatment
- Mental health and addictions silos
 - Mental and addictions are still separately funded streams in the health care system
- Systems challenges will still exist
 - Wait times for detox and residential treatment





Next Steps

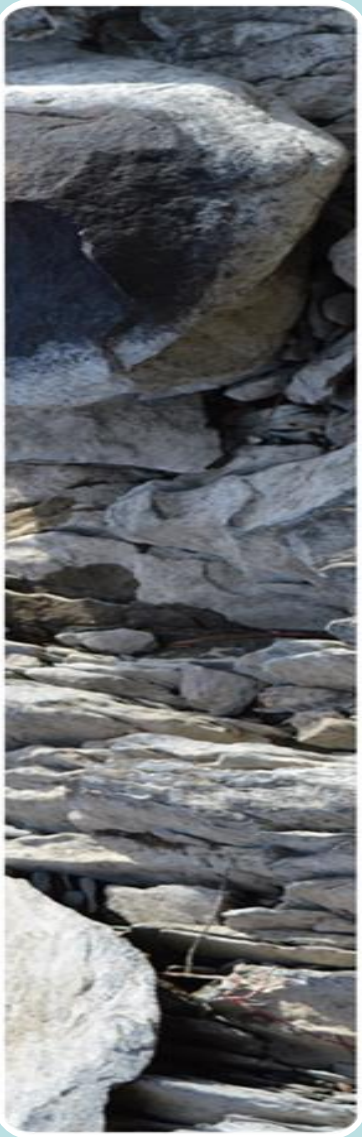
Data Analysis



- Provincial Report of findings
- Develop draft tool
- Return to development sites
 - Present first draft
 - Receive feedback and input

Tool Development

- Validity and reliability of tools
 - Statistical validity
 - Face validity
 - Plan for piloting
 - Length of time to be determined
- Piloting
- Evaluation





Beyond the Tools...

Training and Support



- For the assessment tools in development
- On the value and importance of screening and assessment
- Clinical support and supervision for front line service providers across the region

Nia:wen and Chi-miigwech!



References

- Assembly of First Nations, National Native Addictions Partnership Foundation, & Health Canada. (2011). *Honouring our strengths: a renewed framework to address substance use issues among First Nations people in Canada*. Retrieved from http://nnapf.com/wp-content/uploads/2014/02/Honouring-Our-Strengths-2011_Eng1.pdf
- Evidence Exchange Network. (2012). *Improving assessment and performance monitoring in Ontario's addiction system*. Retrieved from http://eenet.ca/wp-content/uploads/2012/11/ImprovingAssessmentPerformanceMonitoring_Summer2012.pdf
- Lavallee, L. (2009). Practical application of an Indigenous research framework and Indigenous research methods: Sharing circles and Anishnaabe Symbol-Based Reflection. *International Journal of Qualitative Methods*. 8, 21-40.
- Roche, A.M., Duraisingam, V., Trifonoff, A., Battams, S., Freeman, T., Tovell, A., Weetra, D., & Bates, N. (2013). Sharing stories: Indigenous alcohol and other drug workers' well-being, stress and burnout. *Drug and Alcohol Review*. 32, 527-535.
- The First Nations Information Governance Centre (FNIGC). (2014). *Ownership, Control, Access and Possession (OCAP®): The path to First Nations information governance*. Retrieved from http://fnigc.ca/sites/default/files/docs/ocap_path_to_fn_information_governance_en_final.pdf

Trauma-Informed Screening and Assessment Tools for First Nations and Inuit Peoples

Thanks to all participants for joining today's webinar.

EENet would also like to give a special THANKS to Holly and Krystine for today's presentation!



Please take a few minutes to answer our survey on today's webinar:

http://fluidsurveys.com/s/dtfp_trauma-informed_30Jun16/

The recording of today's webinar will also be posted the [project web page](#) shortly.

Next webinar in Health Canada DTFP-ON series:

DTFP Implementation Webinar

Thursday July 21, 1pm – 2:30pm

Register [here](#)

The event will focus on:

- Early impacts of the Ontario implementation projects
- How the projects are aligning with priorities in the provincial mental health and substance use treatment system
- Innovative ways to sustain this work

For additional updates about the Ontario DTFP projects, sign up for our newsletter at:
<http://eenet.us2.list-manage.com/subscribe?u=139298292eb07b4d94f3d7768&id=c75fdbe945>