

MAKING THE SHIFT

YOUTH HOMELESSNESS

SOCIAL INNOVATION LAB

Bridging Research and Practice

March 8, 2019

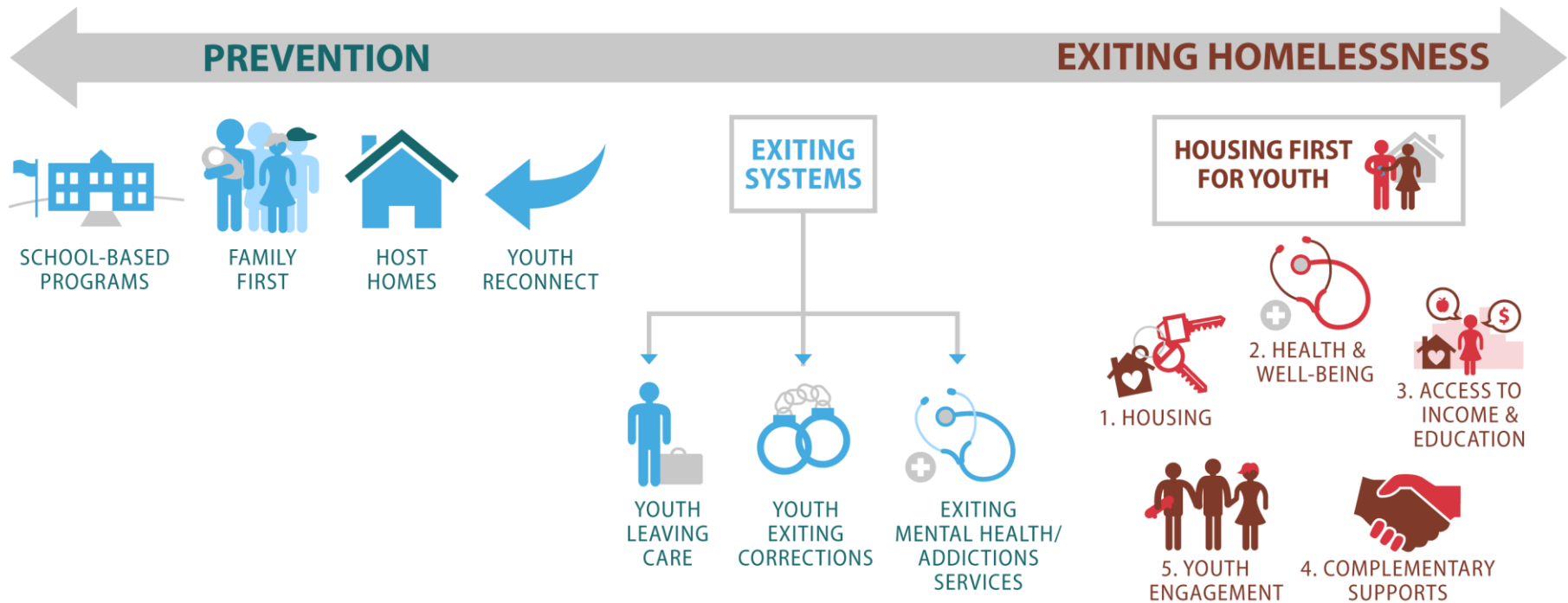


canadian
observatory on
homelessness

A WAY HOME
VERS UN CHEZ-SOI
CANADA



Building the Evidence Base

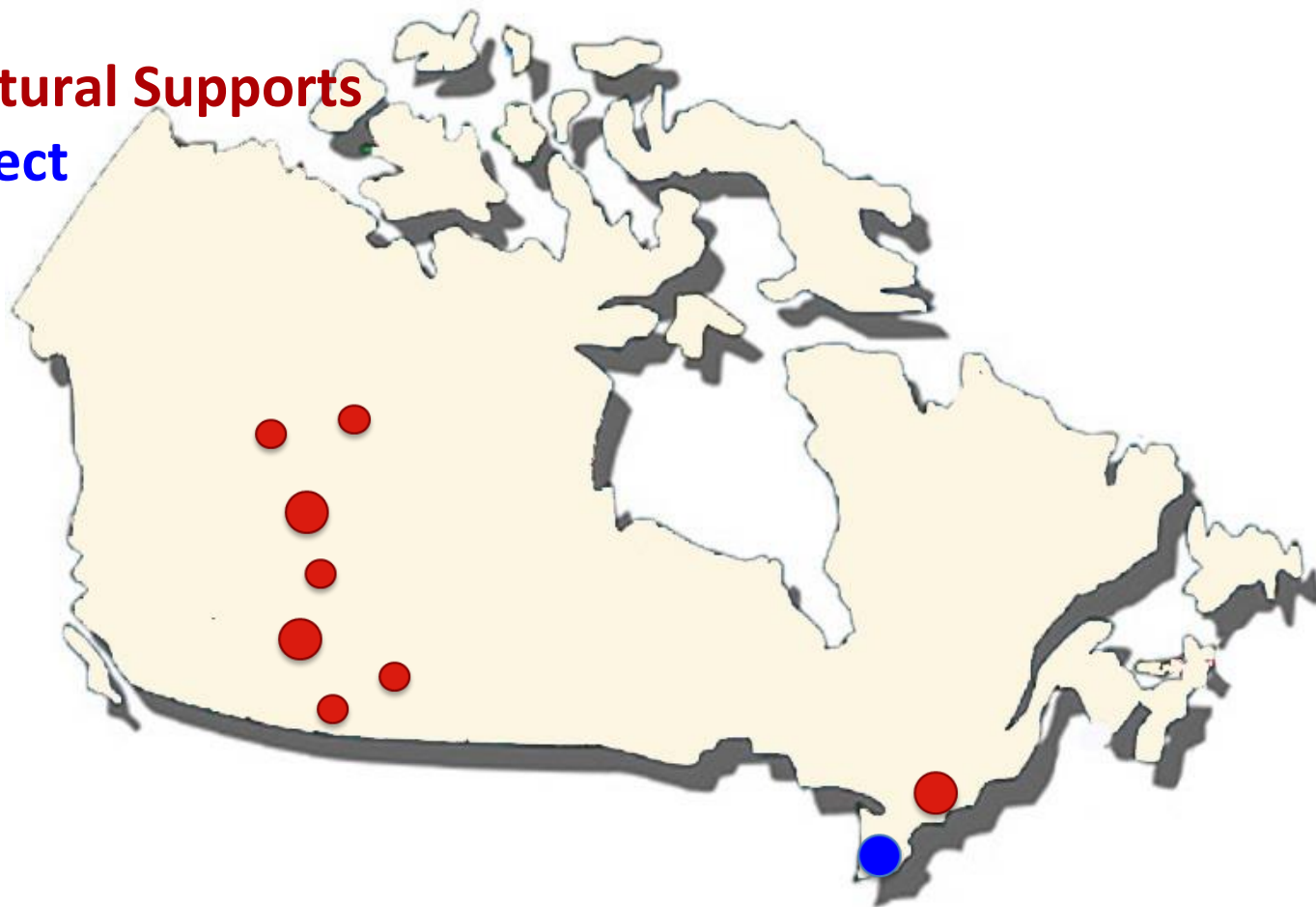


Making the Shift

Prevention Demonstration Projects

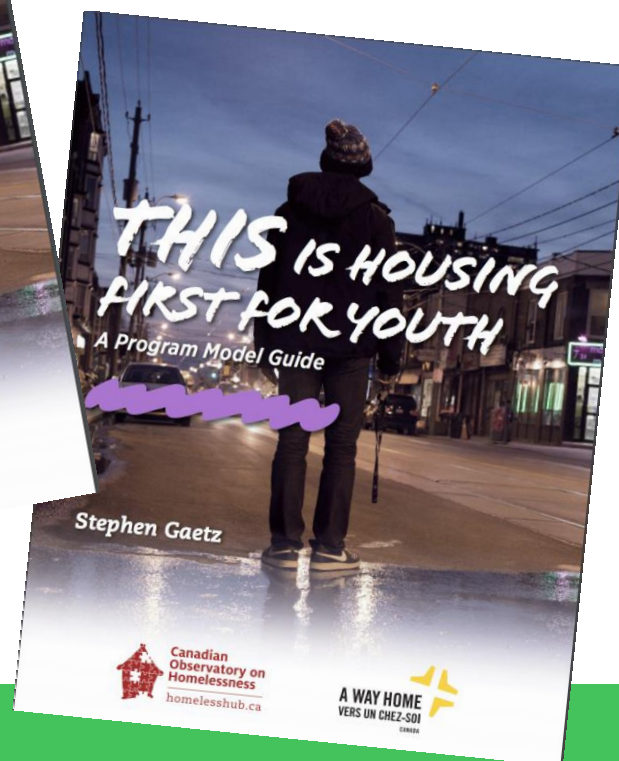


- **Family and Natural Supports**
- **Youth Reconnect**



Making the Shift

HF4Y Demonstration Project



Making the Shift

HF4Y Demonstration Project

Ottawa

- delivered (via third party agreement) with Youth Services Bureau, with CMHA Ottawa and John Howard Ottawa



Ottawa

John Howard Society of Ottawa

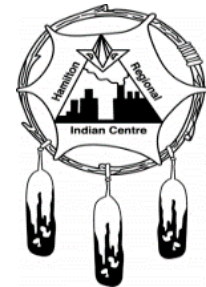
Toronto

- ... with WoodGreen Community Services



Hamilton

- ... with Hamilton Regional Indian Centre



THE CORE PRINCIPLES OF HOUSING FIRST FOR YOUTH



1. A right to housing with no preconditions
2. Youth choice, youth voice and self-determination
3. Positive youth development and wellness orientation
4. Individualized, client-driven supports with no time limits
5. Social inclusion and community integration



Making the Shift

HF4Y Demonstration Project



Hamilton: Endaayaang

- Indigenous-identifying youth, aged 16-24
- Exiting systems (care, justice, hospital, etc.)
- Infusing the program model with culture
- Drawing from the Circle of Courage, and Seven Grandfather Teachings

Making the Shift

Indigenous Advisory Circle

- Includes Elders, MtS project partners, Indigenous service providers, and young people

The Waakebiness-Bryce Institute for Indigenous Health offering:

- student and professional research (and coordination) support
- research evaluation and data dissemination
- use of office space in a fully Indigenous workplace



UNIVERSITY OF TORONTO
DALLA LANA SCHOOL OF PUBLIC HEALTH
Waakebiness-Bryce Institute for Indigenous Health



Making the Shift

HF4Y Demonstration Project

Ottawa: Making the Shift



Making the Shift

Ottawa HF4Y Demonstration Site

Youth Services Bureau of Ottawa

- Program administration
- Case management services

CMHA Ottawa

- Case management services
- 1 LBGTQ2S+ focused case load

John Howard Society of Ottawa

- Case management services

Making the Shift

Ottawa HF4Y Demonstration Site

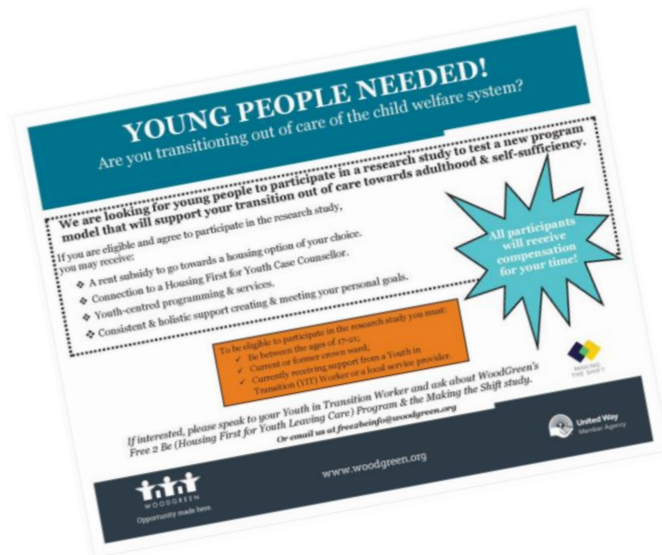
Participants

- 80 young people aged 18-24 years
- Moderate acuity (per SPDAT)
- Newly homeless or unstably housed (e.g., transitional/supportive living)
- In need of support to locate or maintain housing in Ottawa area
- Recruited through referrals from youth-serving agencies across Ottawa

Making the Shift

Toronto HF4Y Demonstration Site

Free 2 Be



Making the Shift

Toronto HF4Y Demonstration Site

Participants

- 80 young people aged 17-21 years at intake
- Crown ward (or similar status) transitioning/who have transitioned out of care
- Homeless or marginally housed and requires support securing or maintaining housing
- In need of support to locate or maintain housing in
- Recruitment pathway through child and youth protections as well as community, youth-facing agencies

Making the Shift

HF4Y Research and Evaluation Design

- Formative Evaluation
- Fidelity Assessment
- Mixed-methods community-based Randomized Controlled Trial

Making the Shift

Measuring Outcomes



1. HOUSING
SUPPORTS



2. HEALTH & WELL-BEING



3. ACCESS TO INCOME
& EDUCATION



4. COMPLEMENTARY SUPPORTS



5. SOCIAL INCLUSION

