

# DID YOU KNOW?

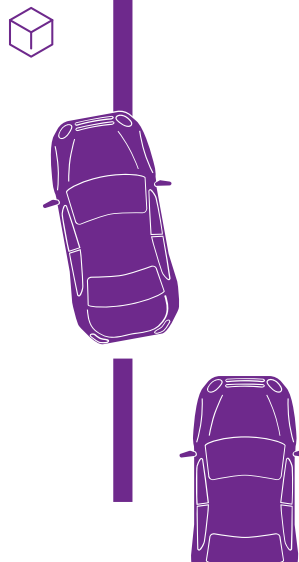


**Cannabis can change how you drive, regardless of your age.**

**Younger and older drivers have been shown to be affected by cannabis.**



**Healthy drivers who consume cannabis do more 'weaving' and react more slowly to events on the road.**



**They also tend to compensate by slowing down and increasing their distance from other cars.**



**If you consume alcohol and cannabis together, you may be substantially more impaired.**



**Stay safe and avoid driving after using cannabis.**



This information is based on the research literature and observation from the "Dose-dependent effects of cannabis on simulated driving in adults over 65 years of age" research project. This infographic was produced by the Knowledge Mobilization team in the Provincial System Support Program at the Centre for Addiction and Mental Health. Funding was provided by Transport Canada.